

[View this email in your browser](#)



ESTHER CITY COUNCILMEMBER
DISTRICT 3

KIA'ĀINA

ĀHUIMANU | HE'EIA | HA'IKŪ | KĀNE'OHE | MAUNAWILI
KAILUA | OLOMANA | ENCHANTED LAKE | WAIMĀNALO



October 29, 2021

**Grants in Aid Program for FY 2023:
Deadline November 23**



Hui Mālama o ke Kai Foundation in Waimānalo

The City and County's Grants in Aid (GIA) program for the Fiscal Year (FY) 2023 is now open for proposals! The GIA fund is administered by the Department of Community Services and funds are used to help economically or socially disadvantaged groups or for the public benefit of arts, culture, economic development, or the environment. In FY 2022, over \$8.8 million in GIA funds were awarded to 63 organizations, with over \$800,000 in GIA funds being awarded to District 3 projects. Projects that received grants include the Waimānalo Health Center, the Hui Mālama o Ke Kai Foundation, and the Kānehūnāmoku Voyaging Academy.

Potential applicants can go to the Department of Community Services (DCS) GIA webpage (<https://www.honolulu.gov/cms-dcs-menu/site-dcs-sitearticles/44363-gia-rgp-training-page.html>), which has grant proposal videos explaining mandatory requirements to receive grant funding. The grant proposal application can be accessed here

(<http://www4.honolulu.gov/bfspurchasingbids/main/vueOpenBids.asp?sType=G>).

The deadline for grant proposals is on November 23, 2021 at 2:00 p.m.

DLNR Tackles Commercial Violations on the Windward Side



DLNR Officials said Twogood Kayaks's permit had expired, and the owner admitted his company's guilt. (Department of Land and Natural Resources)

Twogood Kayaks Hawai'i, Inc. was fined \$25,000 for commercial use violations by the state's Board of Land and Natural Resources on October 22. The vote was unanimous. Beginning in May 2020, the Department of Land and Natural Resources' (DLNR) Division of Conservation and Resources Enforcement (DOCARE) began observing Twogood Kayak guides assisting customers with launching kayaks into the ocean at Kailua Beach. The Hawai'i Administrative Rules require commercial operators like Twogood to hold a current and valid permit,

issued by the Division of Boating and Ocean Recreation (DOBOR). These violations occurred while Twogood's operations were not permitted, and their actions were also likely in violation of the City's commercial activities ban at Kailua Beach Park.

In a related issue, DLNR is proposing a \$180,000 fine for a boat owner conducting illegal boat tours in Kāneʻohe Bay between May and September of this year. See news story: <https://www.hawaiinewsnow.com/2021/10/08/businessman-accused-conducting-illegal-boat-tours-kaneohe-bay-faces-180000-fine/>. This boat was an eyesore for residents of Iliana Street in Kailua and illegally parked on neighboring church property for over two years until recently.

DLNR Hotlines to report violations:

DLNR Enforcement: (808) 643-DLNR

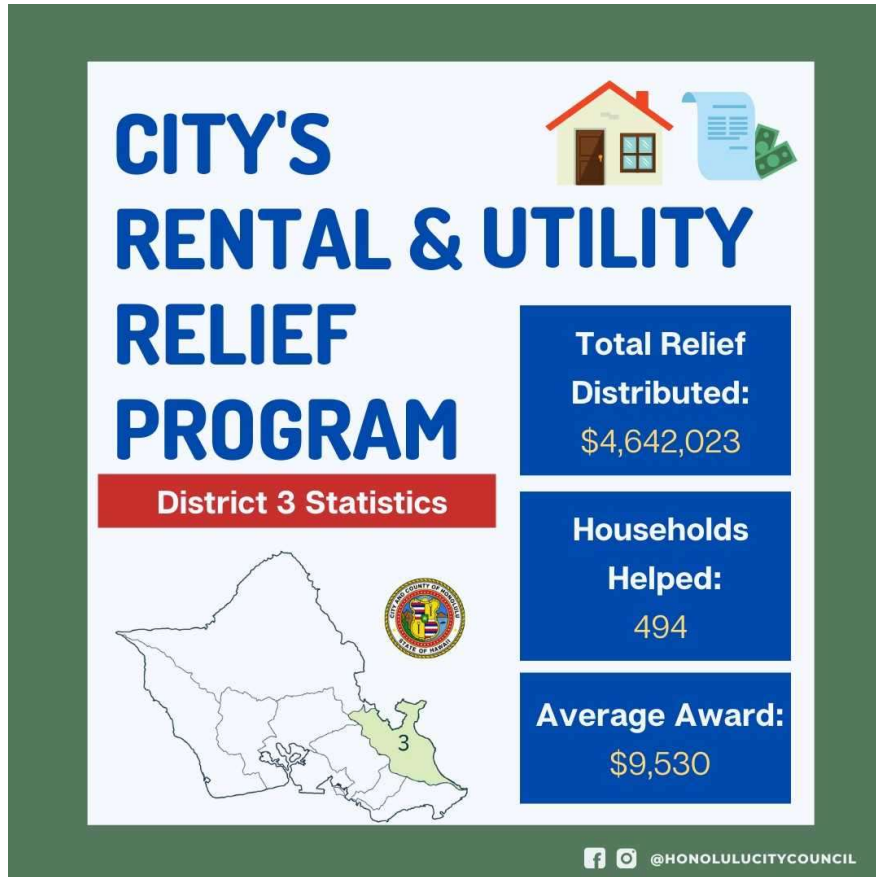
Burials: (808) 692-8015

\$4.6 Million Provided in District 3 for Rental and Utility Relief Program

On October 19, my Committee on Housing and the Economy got an update on the City's Rental Relief and Utility Relief Program from the City's vendors – Kūhiō Lewis, president and CEO of the Council for Native Hawaiian Advancement and Rob Van Tassell, president and CEO from Catholic Charities Hawai'i. Both have done an incredible job in administering this program, which has been recognized by the U.S. Treasury Department as one of the fastest distributors of Rental and Utility Relief funds across the country. The program provides aid to families experiencing financial hardship caused by the ongoing pandemic. Over \$80 million has been distributed to nearly 10,000 households on O'ahu, including \$4.6 million for nearly 500 households in District 3 with an average of \$9,500 for an award.

If you know of anyone who is in need of assistance, please go to:

<https://www.oneoahu.org/renthelp>.



Kamehameha Schools He'eia Plan Virtual Open House on November 9

Please join the Kamehameha Schools (KS) for a virtual open house to learn more about its He'eia Plan, which seeks to develop a vision, physical master plan, and implementation strategy that will guide and prioritize KS actions for future planning,

redevelopment, and operations of its land in the He'eia Ahupua'a. To register, please click [here](#).

WHAT DO YOU ENVISION FOR THE FUTURE OF HE'EIA?
YOUR MANA'O MATTERS!

Join us for the
**HE'EIA PLAN
VIRTUAL OPEN HOUSE**
Tuesday, November 9, 6:30 p.m.

 Register online:
https://www.bit.ly/ks_heeia_openhouse

Join us online to learn more about the Kamehameha Schools (KS) He'eia Plan!

The purpose of the plan is to develop a vision, physical master plan, and implementation strategy that will guide future planning of approximately 507 acres of land in the He'eia Ahupua'a in the Ko'olau Region, with a primary focus on the 55 acres of commercial lands.

For More Information Email or Visit the Website Below:
HeeiaPlan@ksbe.edu
www.ksbe.edu/heeia



Kamehameha Schools

**Comments being sought on Bill 38 –
Ban on Commercial Activities in Waimānalo**



On October 21, the Parks and Community Services Committee held a hearing on [Bill 38](#), my bill which bans commercial activities at city managed beach parks and right of ways in Waimānalo, except for commercial filming.

In order to gather more information about various components of commercial activities, including the various categories under commercial filming, I asked Chair Augie Tulba to defer the bill until committee action in November so that I can have time to consider modifications to the bill. Please email me at ekiaaina@honolulu.gov if you would like to provide your mana'o.

At the hearing, I reminded everyone that most of the City managed beach parks in Waimānalo are located on Hawaiian Home lands. In the license agreement with the Department of Hawaiian Home Lands, the City agreed to limit commercial activities in these parks. Given the trust nature of these lands, in balancing the concerns of users of Waimānalo beach parks, I will be giving particular emphasis to the needs and concerns of Waimānalo residents and Hawaiian Home lands beneficiaries.

Update on Transient Accommodations Tax/Bill 40



*Ho'omaluhia Botanical Garden, Kāne'ohe
Credit: Department of Parks and Recreation*

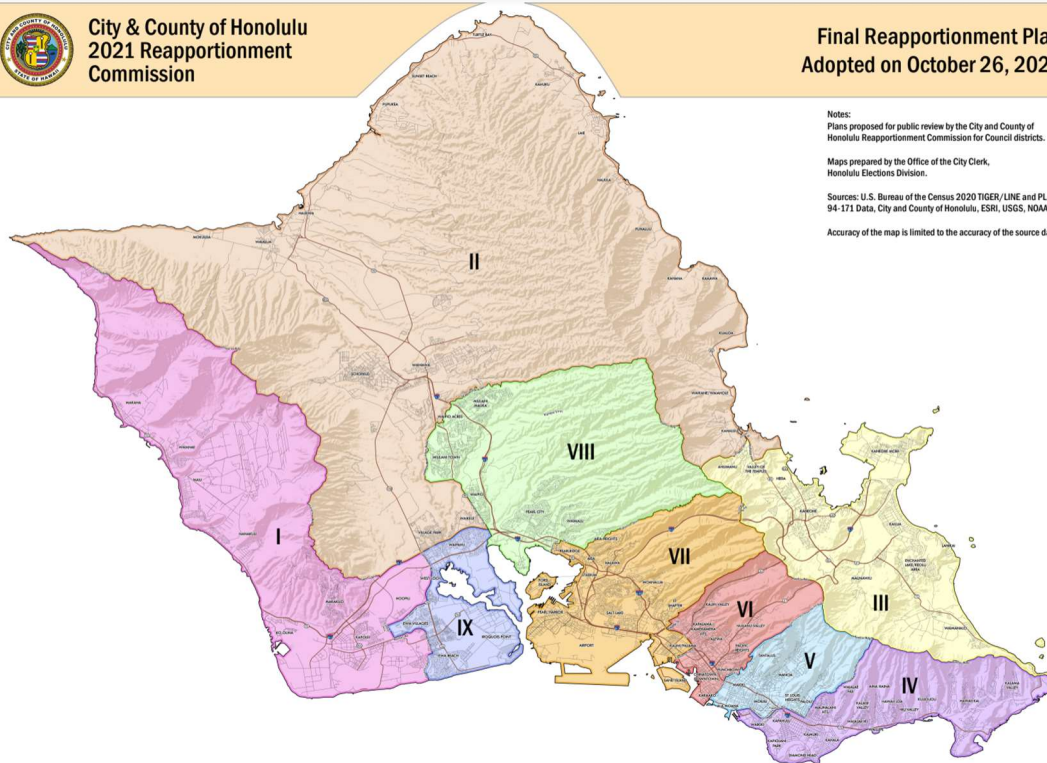
On October 20th, the Budget Committee, of which I am a member, started discussions on Bill 40, which would create a 3% Transient Accommodations Tax (TAT) at the county level. In response to the concerns about the financial impact on local residents, I sought to introduce an exemption for kama'āina. Regrettably, because the State did not provide authority for such an exemption or delegate such exemption authority, I was unable to offer this amendment at the hearing. However, I was successful in passing an [amendment](#), which would allocate a percentage of funds to mitigate the impacts of visitors on public facilities and natural resources. The next step is for the City Council to consider Bill 40 at the full Council meeting on November 10. To view the calendar, please click [here](#).

My PROPOSED CD1 makes the following amendments:

- A. Amends proposed new ROH Section 8A-1.1(3) in SECTION 2 of the bill to clarify that funds in the special account must:
1. Be used to mitigate the impacts of visitors on public facilities and natural resources; and
 2. Supplement, and not supplant, any funds regularly appropriated for the purposes specified in paragraph (A) of ROH Section 8A-1.1(3).

Should legal concerns be raised on my amendment relating to the City Charter, it is my intent to introduce my amendment free-standing so that it could be included on the next election ballot if passed by the City Council. It is my belief that the TAT was intended to mitigate impacts from visitors on our infrastructure, natural resources, and quality of life. This must be a part of the allocation for TAT revenues.

**No Changes for District 3 under City's
Honolulu Reapportionment Commission**



Notes:
Plans proposed for public review by the City and County of Honolulu Reapportionment Commission for Council districts.

Maps prepared by the Office of the City Clerk,
Honolulu Elections Division.

Sources: U.S. Bureau of the Census 2020 TIGER/LINE and PL 94-171 Data, City and County of Honolulu, ESRI, USGS, NOAA.

Accuracy of the map is limited to the accuracy of the source data.

On October 26, the Honolulu Reapportionment Commission approved by 7-2 the map entitled "Kaena/Makapuu Member Draft 1 (Public Hearing Amendment)" which took into account the vast majority of public testimony received over the last few months.

According to Natalia Hussey-Burdick, our commissioner for the Windward side, the map does the following:

- Keeps Windward district the same as it is now (no wraparound with Hawai'i Kai and doesn't split Ahuimanu)
- Combines Mililani Town & Mililani Mauka with the Pearl City district
- Combines 'Ewa with Waipahu
- Mostly Mauka-to-Makai boundary lines in town, most notably in the Kalihi area which currently has boundary lines that are parallel to the shoreline
- More sensible boundaries in Makiki/Mānoa (the "modified existing districts" plan had 2 random Mānoa streets split off into a separate district)

The City's commission has until January 2 to submit a final report. At the state level, house redistricting is ongoing and contentious. For more information on state redistricting and meetings, please go to the State Reapportionment Commission's website at: <https://elections.hawaii.gov/about-us/boards-and-commissions/reapportionment>.

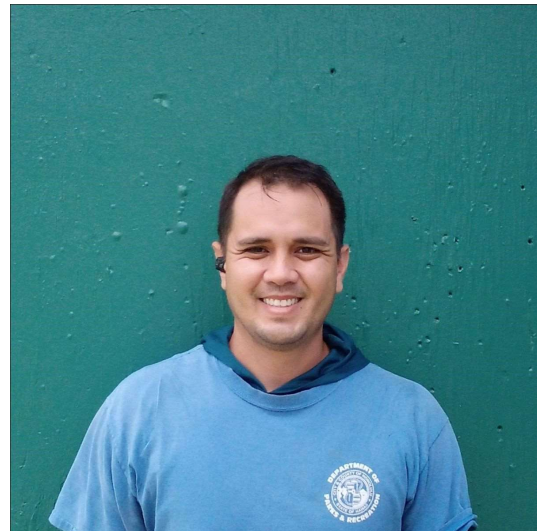
For the latest commission action on October 28, please see Civil Beat's story [*The Plan To Redraw Hawaii's Political Lines Goes Out For Public Comment: The redistricting commission is moving a widely disliked plan forward while an alternate plan drafted by a Kailua resident is getting some support.*](#)

Mahalo to the leadership of our Kailua Neighborhood Board Chair Bill Hicks for his leadership on the state redistricting plan!

In the Community: Thomas Null and Michael “Kekoa” Matsutani



Thomas Null



Michael “Kekoa” Matsutani

Congratulations to Thomas Null and Michael “Kekoa” Matsutani who work at Ho‘omaluhia Botanical Gardens in Kāne‘ohe! Both have been recognized as Department of Parks and Recreations Employees of the Year.

As a plant propagator over at our breathtaking Ho‘omaluhia Botanical Garden, Tom’s skill and excellent work ethic are evident through his well-organized & meticulously documented nursery, his willingness to step-up as a leader in tough times, and his immense horticultural knowledge which he readily shares with other staff and garden visitors. Tom is prompt, dependable, and routinely demonstrates that he loves his job and our diverse, lush botanical gardens.

As a groundskeeper, Michael truly personifies aloha and a sense of community care through every aspect of his work. He is well-known for consistently exceeding his standard duties, exemplifying care, compassion, and respect to all of those who are fortunate to interact with him professionally and personally. Whether that’s making sure Summer Fun keiki are well-fed and kept safe with clean facilities or assisting kūpuna through simple acts of kindness by helping to carry their belongings, you can always find Michael going above and beyond the call of duty to make everyone’s park experience more enjoyable.

Ho‘omaluhia Botanical Garden is free of admission and is open from 9:00 a.m. to 4:00 p.m. For more information, you can visit their webpage at: <https://www.honolulu.gov/parks/hbg.html?id=569:ho>.

72% of O‘ahu’s Population Vaccinated



Great turn out for free vaccinations, boosters, and testing in Kahalu'u on October 27. Rocking it with Senator Jarrett Keohokalole, Nā'ālehu Anthony and Kealoha Domingo! Join us on November 17 and 24 from 4 pm to 8 pm.

For the last two months I have been pleased to participate with vaccination and testing clinics with the city, state, health care providers, and my Windward colleagues Senator Jarrett Keohokalole, Senator Chris Lee, Representative Patrick Branco, and Representative Lisa Marten throughout District 3.

On O'ahu, more than 72% of the total population is now fully vaccinated and more than 84% of the eligible population is fully vaccinated.

The vaccine is safe, effective, and we urge all eligible people to learn more and find a vaccination location by visiting oneoahu.org/find-vaccine.

Community Outreach



Councilmember Kia'āina is working with City's Department of Transportation Services and the staff and management of Lani Huli Elderly Apartments in Kailua to increase the amount of parking stalls for tenants.

One of the most important jobs as your Councilmember is to make sure that you are able to reach me with your inquiries or to share your concerns. You can either email me at ekiaaina@honolulu.gov or call me at (808) 768-5003. You may also want to follow me on my [Facebook page](#).

If you want to contact City agencies directly, you can also utilize the City's 311 mobile application, which provides a free, simple, and intuitive platform empowering people to report potholes, broken streetlights, cracked sidewalks, illegal dumping, vandalized/broken signs and more via your smartphone. Please note that this app serves as a tool for residents to request City services and report non-emergency issues, which will then be reviewed by the appropriate City department and assigned. You can also access this service through the City's website [here](#).

You can also call the City's information hotline at: (808) 768-CITY (2489).

Councilmember Esther Kia'āina, District 3

City and County of Honolulu
530 South King Street, Room 202
Honolulu, HI 96813
(808) 768-5003
E-mail: ekiaaina@honolulu.gov

Want to change how you receive these emails?
You can [update your preferences](#) or [unsubscribe from this list](#).